

For Shawn Crouch and Ensemble Ibis

When Wood and Metal Became Alive

1. I Mean What You See
2. They Called to Us in Dreams of Shadow and Sun
3. Dancing on Tomorrow's Wind

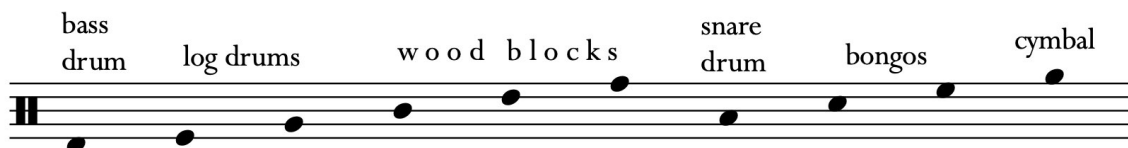
Instrumentation

Flute (doubling piccolo)
Oboe
Clarinet in B \flat (doubling bass clarinet)
Bassoon

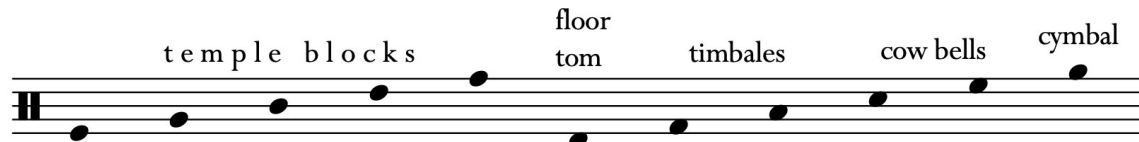
Horn in F
Trumpet
Trombone

2 Percussionists:

Percussion 1: marimba, bass drum, Slit (log) drum (low and high pitch), 3 wood blocks (small, medium, large), small concert snare drum, bongos, small suspended cymbal



Percussion 2: vibraphone, temple blocks, floor tom, timbales, 2 cowbells (low, high), large suspended cymbal, 2 maracas (1 small, 1 large)



Single strings:

Violin 1
Violin 2
Viola
Violoncello
Double Bass

Special thanks to the Lucas Artists Residency Program at Montalvo for the gift of time and space in which to create this work.

Duration: ca. 18 minutes

5 6 7 8

Fl.

Ob.

Cl. in Bb

Bsn

Hn in F

Tpt in C

Tbn.

Perc. 1
slit dr.

Perc. 2
cow bells

Vln I

Vln 2

Vla

Vc.

D. B.

ff *pp* *mf* *jaunty*

ff *pp* *pp*

pp *mp* *pizz.* *mp*

pp *mp* *pizz.* *mp*

pp *mp* *pizz.* *mp*

pp *mp* *pizz.* *mp*

9 10 11 12

Fl.

Ob.

Cl. in Bb

Bsn

Hn in F

Tpt in C

Tbn.

Perc. 1

Perc. 2

Vln I

Vln 2

Vla

Vc.

D. B.

mar.

mp

vib.

motor fast

mf

arco, col legno

pizz.

13 14 15 16

Fl.

Ob.

Cl. in Bb

Bsn

Hn in F

Tpt in C

Tbn.

Perc. 1

Perc. 2

Vln I

Vln 2

Vla

Vc.

D. B.

bon.

mp

timb.

mf

vib.

pizz.

mp

Detailed description of the musical score: This page contains measures 13 through 16 of a piece. The score is arranged in a standard orchestral format. Measures 13 and 14 feature a complex woodwind melody in the Oboe, with the Flute, Clarinet in Bb, Bassoon, Horn in F, Trumpet in C, and Trombone parts resting. In measure 15, the woodwinds continue their melodic line, and the Percussion 1 part enters with a snare drum pattern. In measure 16, the woodwinds conclude their phrase, and the Percussion 2 part enters with a vibraphone pattern. The string section (Violins I and II, Viola, Violoncello, and Double Bass) provides a rhythmic accompaniment throughout, with the Double Bass part featuring a pizzicato effect in measure 16. Dynamics include mezzo-piano (mp) and mezzo-forte (mf).

17 18 bend down [roll inward] 19

Fl. *mp*

Ob.

Cl. in Bb

Bsn

Hn in F

Tpt in C

Tbn.

Perc. 1 *mf*

Perc. 2 *motor off*

Vln I arco, col legno *mf* pizz. *mp*

Vln 2 arco, col legno *mf* pizz. *mp*

Vla arco, col legno *mf* pizz. *mp*

Vc arco, col legno *mf* pizz. *mp*

D. B. *mf*

20 21 22

Fl.

Ob.

Cl. in Bb

Bsn

Hn in F

Tpt in C

Tbn.

Perc. 1

bon.

mp

Perc. 2

cowbells

mp

timb

tom

vib.

mf

Vln 1

Vln 2

Vla

Vc.

D. B.

mp

23 bend

24 bend

A

Fl.

Ob.

Cl. in Bb

Bsn

Hn in F

Tpt in C

Tbn.

Perc. 1

Perc. 2

Vln I

Vln 2

Vla

Vc.

D. B.

straight mute lip bend

mp

bon. / sn.

temple bl.

cow bells

mf

mp

arco ord.

mf

mf

mf

arco ord.

mf

arco ord.

mf

arco ord.

mf

pizz.

pizz.

sfp

mf